

NEW  
PRODUCT!

# EasyView™ Roller Shutters!

## The Roller Shutter With A Permanent View!



## NEW EasyView™ Roller Shutter Brings The Outdoors Indoors!

- Both residential & commercial applications.
- Turn patios & verandahs into extra rooms.
- Shopping centre grilles & cafe applications.
- High quality aluminium & UV resistant polycarbonate profile.
- Commercial grade fully extruded profile.
- Wide shutter widths up to 4000mm.
- Fully retractable into an enclosed pelmet.
- Either manual or motorised operation.
- Various remote control options.
- Removable central support guides where required.
- Choice of profile colours.
- 5 Year Roller Shutter Guarantee.
- Made in Australia.



**EASYVIEW™**  
roller shutters

**CW PRODUCTS**  
HOME AUTOMATION & ROLLER SHUTTERS

# What Is EasyView™?

**EasyView™** is a strong roller shutter system constructed of an extruded aluminium and transparent, UV resistant polycarbonate profile, which provides added security and permanent views of the outdoors.

Suitable for a wide range of domestic applications, **EasyView™** is ideal for outdoor patio, verandah and pergola areas, providing permanent outside views in a modern and sleek design. **EasyView™** provides an affordable way of creating that extra room, while protecting you and your family from the elements in both Winter and Summer.

**EasyView™** is also suitable for various commercial and industrial, shop front, shopping centre grille, cafe, restaurant, counter top and internal separation barrier/doorway applications, or where both security and visibility are required.

The **EasyView™** roller shutter system also allows you to return your space to a fully open area with easy to remove central support guides where required. It's as easy as 1, 2, 3 with **EasyView™**!



Note: EasyView is suitable for internal & external use in low to medium wind environments. For high wind applications exceeding 25 km/h please consult a professional engineer to determine suitability or contact your CW Products representative. The EasyView product warranty does not cover excessive wind damage.

## Manual Or Motorised Control Options



Steel Cable Winder  
(Up To 50Kg)\*



Spring Loaded  
With Key Lock



Remote Control  
With SolarSmart™  
Automation  
12V Motor  
(Up To 50Kg)



PowerSmart™  
Control System  
With 12V Motor  
(Up To 50Kg)\*



Wall Switch  
With 240V  
Electric Motor\*



Remote Control  
With 240V  
Electric SIMU Hz  
Motor



Key Switch  
With 240V  
Electric Motor



Crank Handle  
With 240V  
Electric Manual  
Override Motor



S-05 Remote Control  
(Key Ring Transmitter)  
With 240V  
Electric Motor  
& Multi-Function  
S-05 Radio Receiver  
& Control Unit

\* Control options must be installed in an indoor environment.

# The EasyView™ Design At A Glance!

## BENEFIT 1

High quality motorisation with low voltage solar and manual override options available to ensure shutters are always operational.

## BENEFIT 2

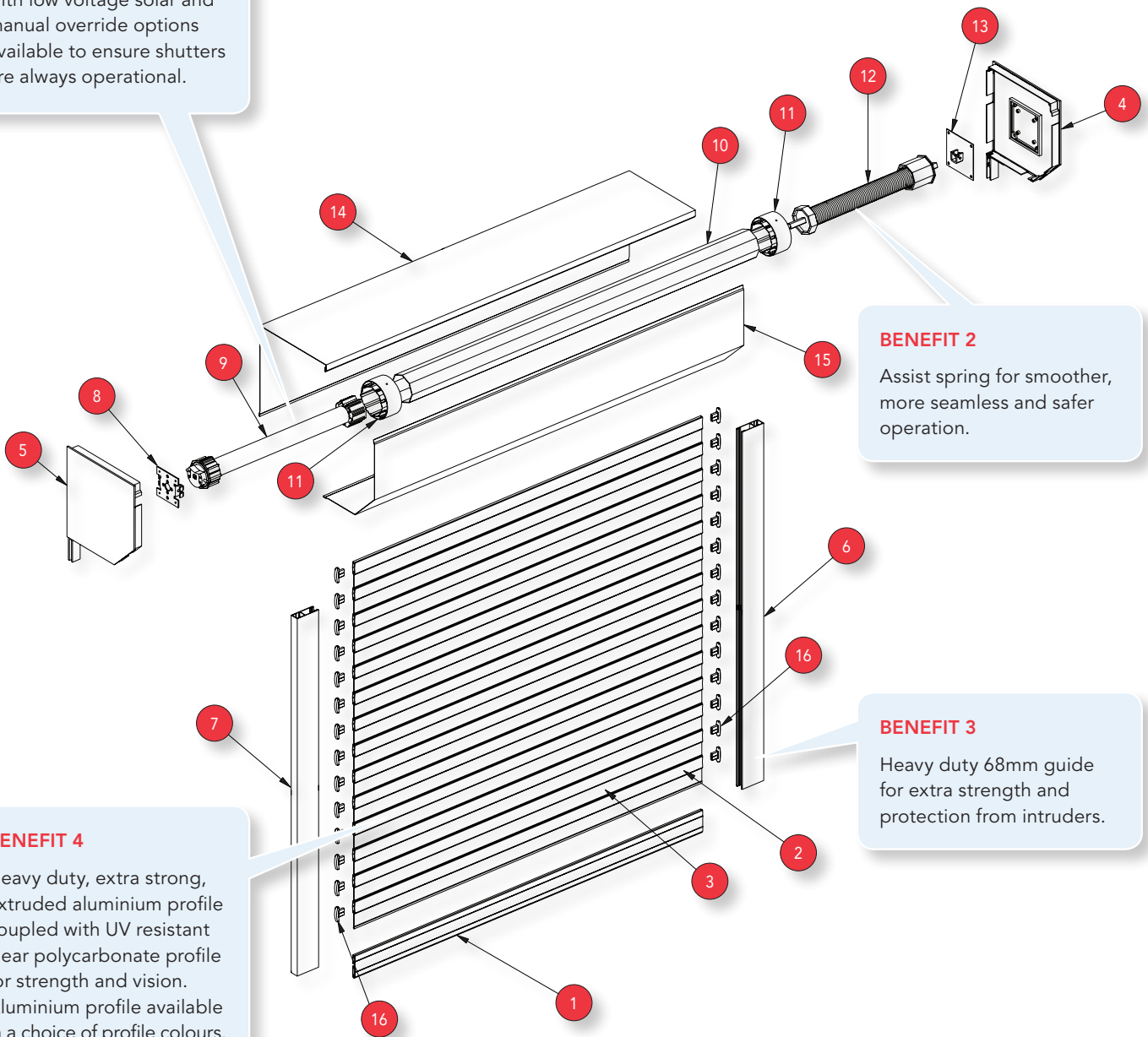
Assist spring for smoother, more seamless and safer operation.

## BENEFIT 3

Heavy duty 68mm guide for extra strength and protection from intruders.

## BENEFIT 4

Heavy duty, extra strong, extruded aluminium profile coupled with UV resistant clear polycarbonate profile for strength and vision. Aluminium profile available in a choice of profile colours.

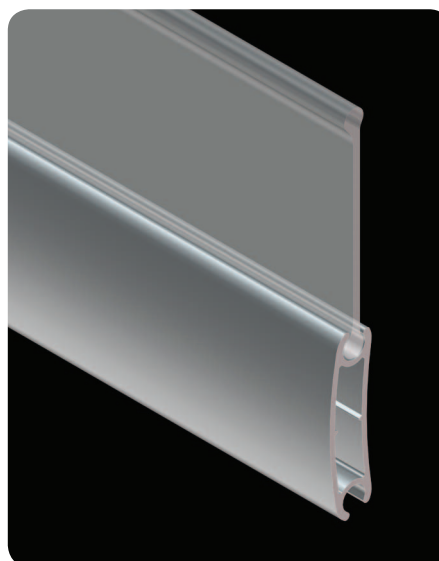


1	Heavy Duty Bottom Bar With Rubber Weather Seal
2	Extruded Aluminium Roller Shutter Profile
3	Clear Polycarbonate Roller Shutter Profile
4	RH Pelmet Side Frame
5	LH Pelmet Side Frame
6	RH Heavy Duty Guide
7	LH Heavy Duty Guide
8	Tubular Motor Bracket

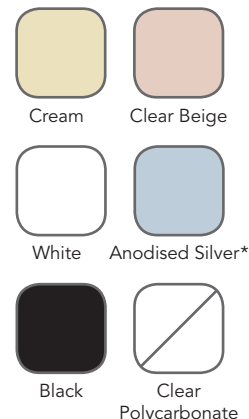
9	Tubular Motor With Crown & Driving Wheel
10	Octagonal 70mm Axle
11	Ring Adaptors
12	Assist Spring
13	Assist Spring Bracket
14	Pelmet Back
15	Pelmet Cover
16	Profile End Clip

# EasyView™ Technical Specifications

Maximum Shutter Width	Up To 4000mm
Maximum Shutter Height	Up To 3000mm
Maximum Surface Area	10m <sup>2</sup>
Number Of Slats/Metre	28
Aluminium Profile Slat Covering	34mm
Polycarbonate Profile Slat Covering	38mm
Aluminium Profile Slat Thickness	9.3mm
Polycarbonate Profile Slat Thickness	4mm
Axle Types	Octagonal Aluminium or Steel
Bottom Bar Dimensions	60mm x 9mm
Guide Dimensions	68mm x 25mm/14mm (Heavy Duty Guide)
Paint Finish	High Quality Powder Coat



## Colour Options



\*Not available for pelmets & side frames. Powder coated options available.

For more information on the EasyView™ Roller Shutter, please contact your nearest dealer, installer or visit [www.cwproducts.com.au](http://www.cwproducts.com.au)!

Authorised Dealer:

Illustrations, photos and colours shown in this brochure are for illustrative purposes only. All technical specifications and dimensions are correct at time of printing and may change without notice. Profile technical specifications and shutter performance may vary in certain applications, eg. wide applications with no solid structure behind the roller shutter. EasyView is suitable for internal & external use in low to medium wind environments. For high wind applications exceeding 25 km/h please consult a professional engineer to determine suitability or contact your CW Products representative. The EasyView product warranty does not cover excessive wind damage. EasyView and the EasyView logo are trademarks of CW Products. © 2014 CW Products.

Exclusively distributed in Australia by **CW Products**

13-23 Doecke Road Murray Bridge SA 5253

Tel: +61 8 8341 0120 Fax: +61 8 8341 1750

Web: [www.cwproducts.com.au](http://www.cwproducts.com.au)

