

NEW  
PRODUCT  
TECHNOLOGY!



## Protect Your Home And Family With CycloneSafe™ Roller Shutters!



### The NEW CycloneSafe™ Roller Shutter:

- Cyclone rated up to C4 T5.
- Tested by James Cook University.
- Complies with AS/NZS 1170.2 2011 (Cyclone Standard).
- Can be used in all Australian cyclone regions including Cyclone Region C & D C4 at 1500mm wide.
- Fully extruded strong aluminium alloy shutters.
- Commercial grade double wall extruded profile.
- Suitable for windows & doors up to 2400mm wide.
- Protects windows from flying debris.
- Choice of profile colours.
- Manual or motorised operation with remote control options.
- Made in Australia.

**CycloneSafe™**  
Roller Shutters



**CW PRODUCTS**  
HOME AUTOMATION & ROLLER SHUTTERS

# Protect Your Home And Family From Storm Damage!

With the recent increase in extreme weather and storm conditions across Australia, protection from cyclones and severe storms has become paramount.

Many Australian home owners and businesses are looking for a better solution for storm protection, especially those located on or near the coast and in tropical regions of Australia.

It is for these reasons that CW Products, (Australia's leading supplier of roller shutters and home automation products) has developed the **CycloneSafe™ Roller Shutter**.

**CycloneSafe™** has a Cyclone Rating up to **C4 T5** and its compliance with **AS/NZS1170.2 2011** Cyclone Standard means it can be used in all Australian Cyclone Regions including **C & D C4** (at a width of 1500mm).

At CW Products we're committed to helping protect Australian families and their homes!

## Scientifically Tested!

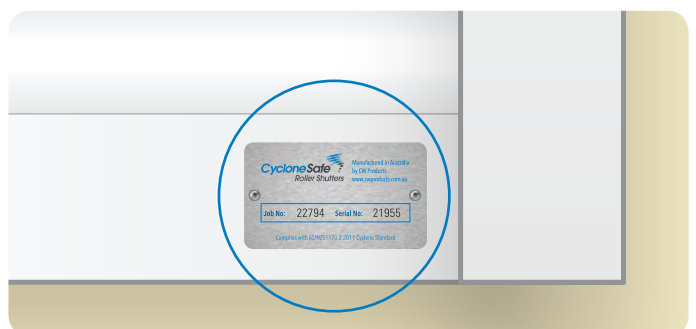
The **CycloneSafe™ Roller Shutter** has been tested by **James Cook University** at their testing facility and has achieved a Cyclone Rating up to **C4 T5** when fully closed.

To simulate extreme wind conditions in the lab, **CycloneSafe™** was exposed to Cyclic Loading in accordance with AS4040.3 and a Fatigue Loading Sequence and Design Pressure Test in accordance with AS4055.

**CycloneSafe™** has been successful in all its performance testing, and complies with **AS/NZS1170.2 2011** Cyclone Standard.

## CycloneSafe™ Authentication

All **CycloneSafe™** shutters are fitted with an Authentication Plate with Serial Number to ensure genuine product and product performance that meets Australian Standards.



# The CycloneSafe™ Design At A Glance!

## BENEFIT 1

High quality motorisation with low voltage solar and manual override options available to ensure shutters are always operational.

## BENEFIT 4

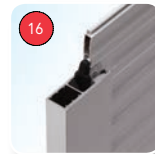
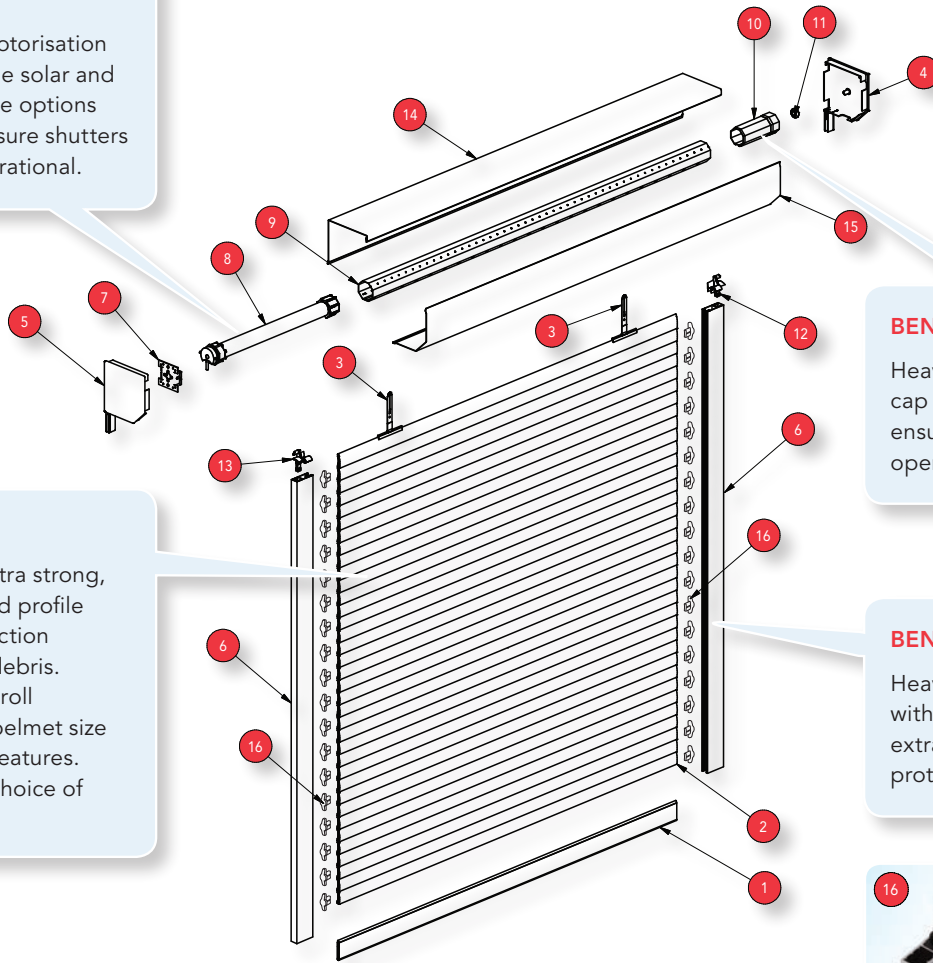
Heavy duty, extra strong, 36mm extruded profile provides protection against flying debris. A tight shutter roll ensures small pelmet size and aesthetic features. Available in a choice of profile colours.

## BENEFIT 2

Heavy duty aluminium axle cap and sealed bearing ensure years of reliable operation.

## BENEFIT 3

Heavy duty 68mm guide with locking system for extra strength and protection from cyclones.



Winged profile end clip inserted and riveted into profile and locked into CycloneSafe guide.

1	Heavy Duty Bottom Bar
2	Extruded Roller Shutter Profile
3	Security Springs
4	RH Side Pelmet Side Frame
5	LH Side Pelmet Side Frame
6	Heavy Duty CycloneSafe Guide
7	Tubular Motor Bracket
8	Tubular Motor With Crown & Driving Wheel

9	Octagonal 60mm or 70mm Axle
10	Aluminium End Cap
11	Sealed Bearing
12	RH Entry Guide
13	LH Entry Guide
14	Pelmet Back
15	Pelmet Cover
16	Winged Profile End Clip

## Manual Or Motorised Control Options



Steel Cable Winder (Up To 50Kg)



Spring Loaded With Key Lock



Remote Control With SolarSmart™ Automation 12V Motor (Up To 50Kg)



Wall Switch With 240V Electric Motor



Remote Control With 240V Electric SIMU Hz Motor



Key Switch With 240V Electric Motor



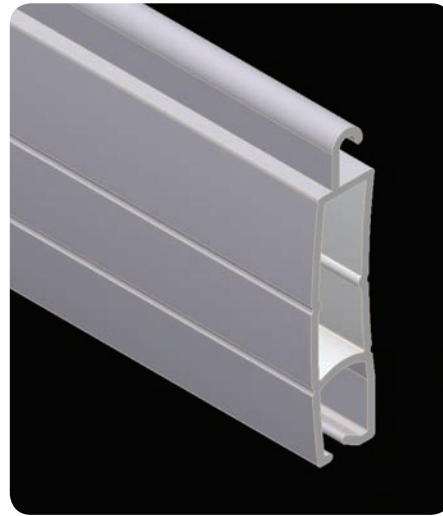
Crank Handle With 240V Electric Manual Override Motor



S-05 Remote Control (Key Ring Transmitter) With 240V Electric Motor & Multi-Function S-05 Radio Receiver & Control Unit

# CycloneSafe™ Technical Specifications

<b>Cyclone Rating</b>	Up To C4 T5
<b>Maximum Shutter Width</b>	Up To 2400mm
<b>Maximum Shutter Height</b>	Up To 2600mm
<b>Maximum Surface Area</b>	6m <sup>2</sup>
<b>Number Of Slats/Metre</b>	28
<b>Profile Slat Covering</b>	36mm
<b>Profile Slat Thickness</b>	9.7mm
<b>Axle Types</b>	Octagonal Steel
<b>Bottom Bar Dimensions</b>	55mm x 8.5mm
<b>Guide Dimensions</b>	68mm x 22mm (Heavy Duty Cyclone Guide)
<b>Paint Finish</b>	High Quality Powder Coat



## Colour Options



Cream

Clear Beige



White

Anodised Silver\*



Black

\*Not available for pelmets & side frames. Powder coated options available.

## Roller Shutter Widths & Cyclone Ratings

Shutter Width	Load Test Type	Test Pressure	Cyclone Rating
2400mm	Inward Loading	3.34 kPa	C2
2400mm	Outward Loading	5.49 kPa	C3
2200mm	Inward Loading	3.34 kPa	C2
2000mm	Inward Loading	4.93 kPa	C3
1500mm	Inward Loading	6.66 kPa	C4
1500mm	Outward Loading	7.40 kPa	C4

For more information on the CycloneSafe™ Roller Shutter, please contact your nearest dealer, installer or visit [www.cwproducts.com.au](http://www.cwproducts.com.au)!

Authorised Dealer:

Illustrations, photos and colours shown in this brochure are for illustrative purposes only. All technical specifications and dimensions are correct at time of printing and may change without notice. Profile technical specifications and shutter performance may vary in certain applications, eg. wide applications with no solid structure behind the roller shutter. For more information please contact your CW Products representative. CycloneSafe and the CycloneSafe logo are trademarks of CW Products. © 2013 CW Products.

Exclusively distributed in Australia by **CW Products**

13-23 Doecke Road Murray Bridge SA 5253

Tel: +61 8 8341 0120 Fax: +61 8 8341 1750

Web: [www.cwproducts.com.au](http://www.cwproducts.com.au)



**CW PRODUCTS**  
HOME AUTOMATION & ROLLER SHUTTERS